



# TRANSFORMATIONAL LAND TRANSPORTATION SYSTEMS

**ATTY. MARTIN B. DELGRA III, REB REA EnP**

*Chairman, Land Transportation Franchising and Regulatory Board*

PUBLIC TRANSPORTATION  
SITUATIONER:

BEFORE:

TRAFFIC



PUJ



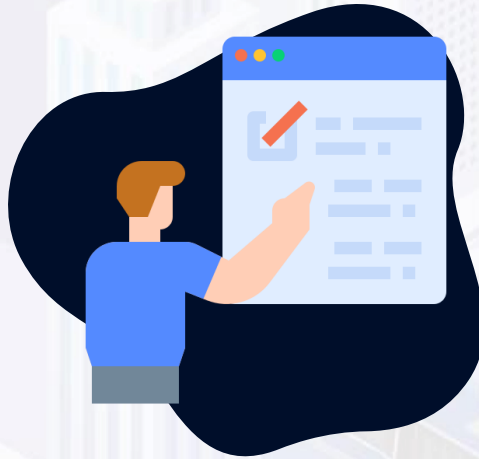
PANDEMIC



CLOSED  
ROUTES

NOW:

# HOW WAS PUBLIC TRANSPORTATION PLANNED BEFORE?



No government-led  
planning of the road  
transit network



Mostly operator-initiated routes  
Franchises issued based on  
Route Measured Capacity  
(RMC)

3

- Route-based only, not network-based
- Doesn't consider road capacity constraint

## OUTCOME



Widespread competition  
among various transport  
modes, overlapping  
routes



Low-capacity vehicles in  
high-demand areas,  
leading to reduced road  
capacity



Air pollution due to high  
sulfur emissions of PUVs

THE PHILIPPINE PUBLIC  
TRANSPORT SYSTEM

PUBs AND PUJs SERVE

**67%**

OF DEMAND

but uses

**28%**

of road space

**90%**  
of the 180,000 PUJs  
nationwide are 15 years old  
and above

PUJ passengers are

**10X**

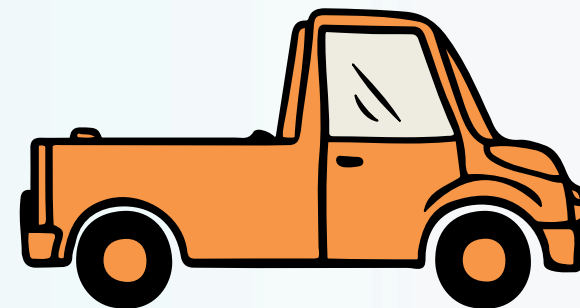
more likely to get into accidents  
more than  
private car riders

**17%**  
ambient pollutions in Metro  
Manila are due to PUJs  
(80% in other cities)



**2.4**  
**BILLION**

in economic  
losses due to  
traffic congestion



**CAR = FILIPINO DREAM**

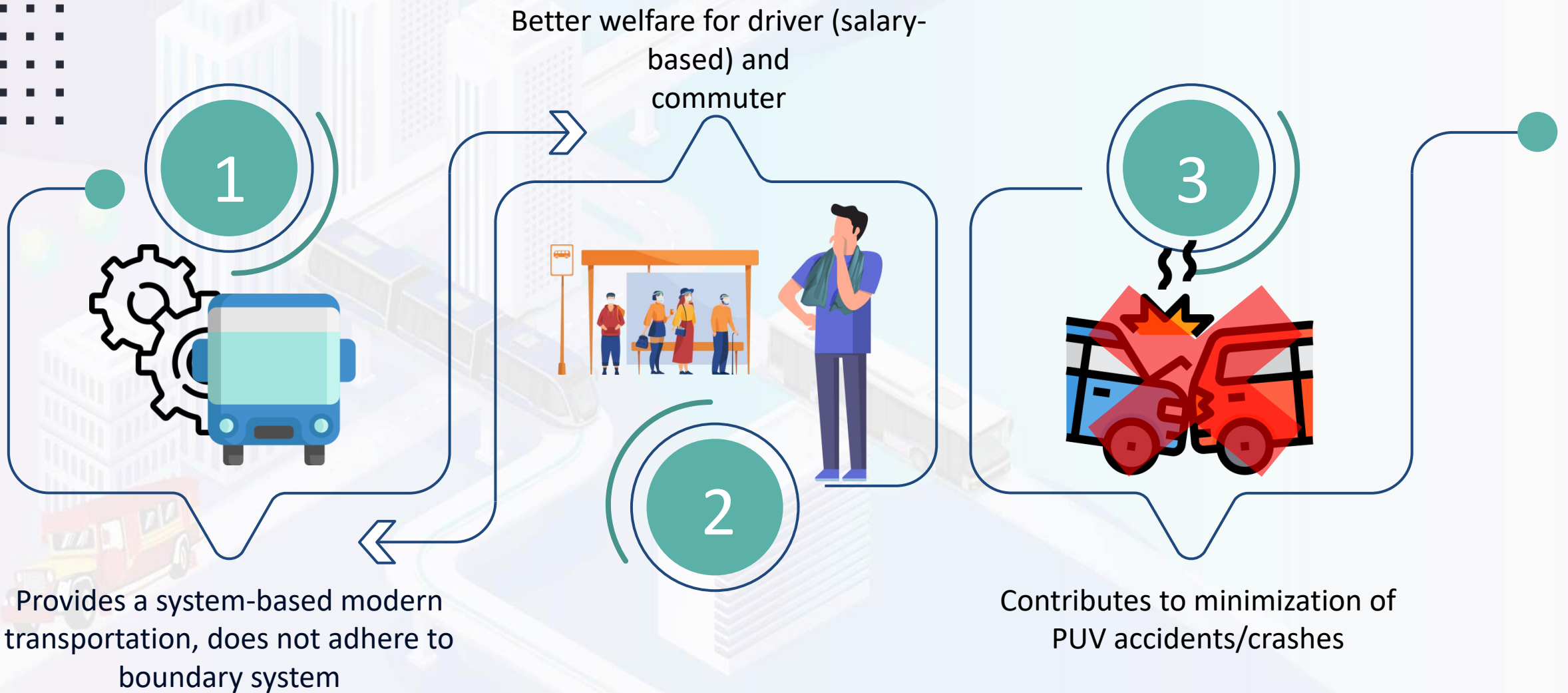


**DISTRESS AND DISCOMFORT  
WHEN COMMUTING**



PUVMP

LAND TRANSPORTATION FRANCHISING  
&  
REGULATORY BOARD



## OBJECTIVES



SOCIAL



ENVIRONMENTAL



ECONOMIC



Regulatory Reform



LGU Local Public Transport Route Planning



Route Rationalization



Fleet Modernization



Industry Consolidation



Financing PUV Modernization



Vehicle Useful Life Program



Initial Implementation



Stakeholder Support Mechanism



Communication

## 10 MAJOR COMPONENTS



## CONSOLIDATION

MODE	NO. OF ROUTES	NO. OF AUTHORIZED UNITS	NO. OF UNITS AWARDED	NOU* (NON-COMPLIANT)	NOU* (OFG COMPLIANT)
PUJ CLASS 2	157	4786	4786	4217	569
PUJ CLASS 3	2	76	76	10	66
UVE CLASS 3	59	1035	1035	981	44

\*NOU - Number of Operational Units

## NEW ROUTES

MODE	NO. OF ROUTES (Authorized)	NO. OF AUTHORIZED UNITS	NO. OF UNITS AWARDED	NOU (OFG COMPLIANT)
PUJ CLASS 1	2	23	8	8
PUJ CLASS 2	13	412	360	169
PUJ CLASS 3	2	48	33	8
UVE CLASS 3	2	33	33	5

## Additional Units to existing routes

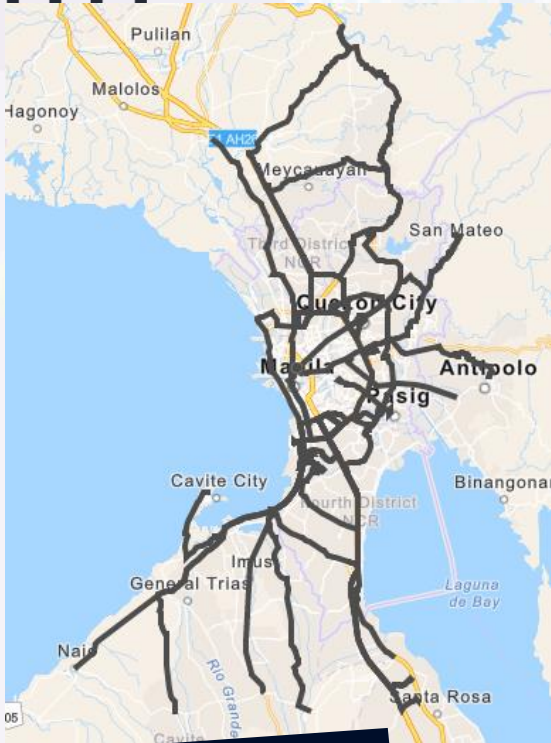
MODE	NO. OF ROUTES (Authorized)	NO. OF AUTHORIZED UNITS	NO. OF UNITS AWARDED	NOU (OFG COMPLIANT)
PUJ CLASS 1	0	0	0	0
PUJ CLASS 2	1	25	25	10
PUJ CLASS 3	0	0	0	0
UVE CLASS 3	1	15	0	0

## MODERNIZED UNITS

\*Total Number of OFG Units includes numbers from New/Developmental Routes, Additional Units to existing routes, Franchise Consolidation

MODE	NO. OF ROUTES (Authorized)
PUJ CLASS 1	8
PUJ CLASS 2	748
PUJ CLASS 3	74
UVE CLASS 3	49
<b>TOTAL</b>	<b>879</b>

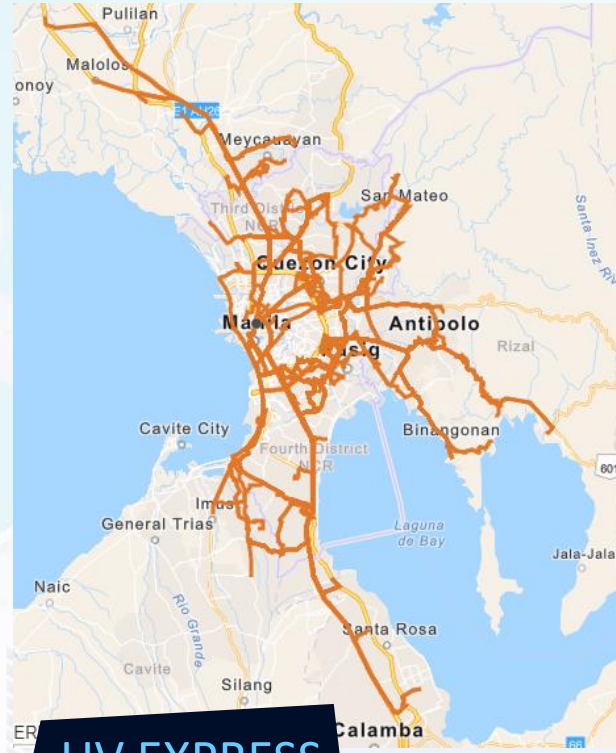
# ROUTE RATIONALIZATION



PUB

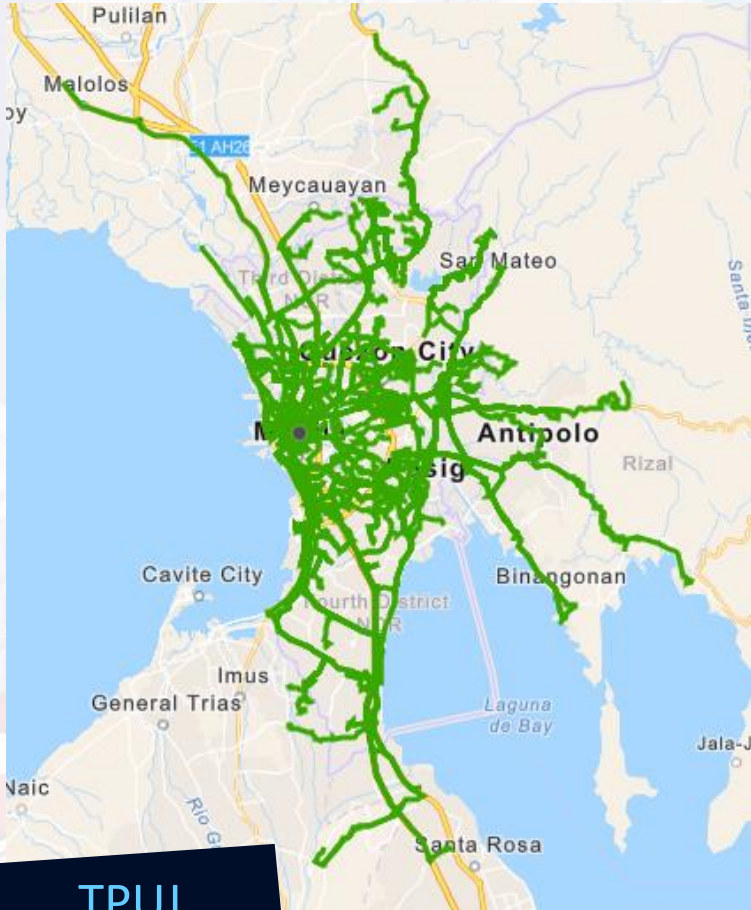


MPUJ



UV EXPRESS

# ROUTE RATIONALIZATION



TPUJ



# ROUTE RATIONALIZATION

IN/INTER-REGIONAL  
TOUCHING METRO MANILA



PUB (CITY)

ROUTES	NOU
35	4,550



PUB (PROVINCIAL)

ROUTES	NOU
241	5,350



P2P (CITY)

ROUTES	NOU
35	404



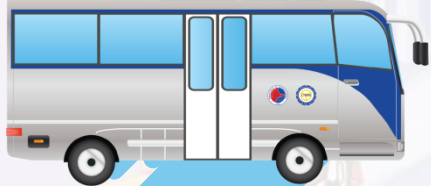
P2P (PROVINCIAL)

ROUTES	NOU
7	204



TRADITIONAL PUJ

ROUTES	NOU
475	39,174



MODERNIZED PUJ

ROUTES	NOU
51	970



UV EXPRESS

ROUTES	NOU
144	9,091



UV EXPRESS CLASS 3

ROUTES	NOU
3	55



TAXI

NOU
21,663



TNVS

NOU
25,495

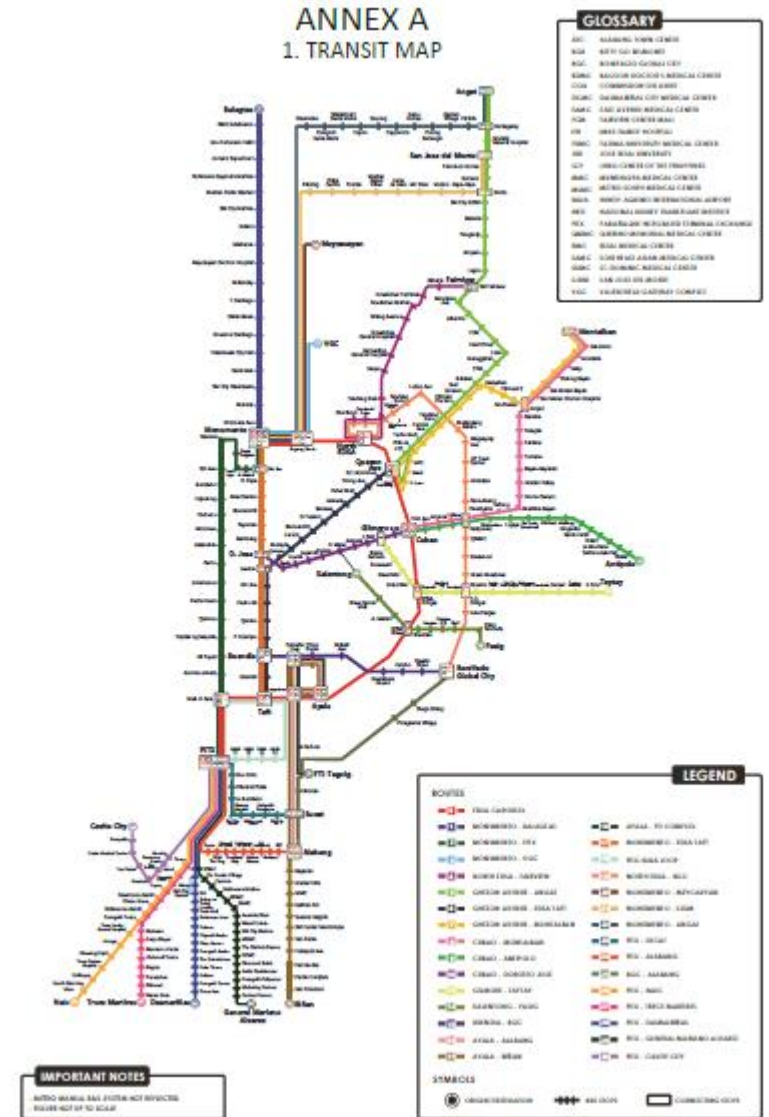
# EDSA BUSWAY

Centralization of PUVs  
traversing through EDSA



Supplemental  
Public Transportation  
for MRT/LRT1

## CURRENT POLICIES TO CHANGE PUBLIC TRANSPOR STATUS QUO

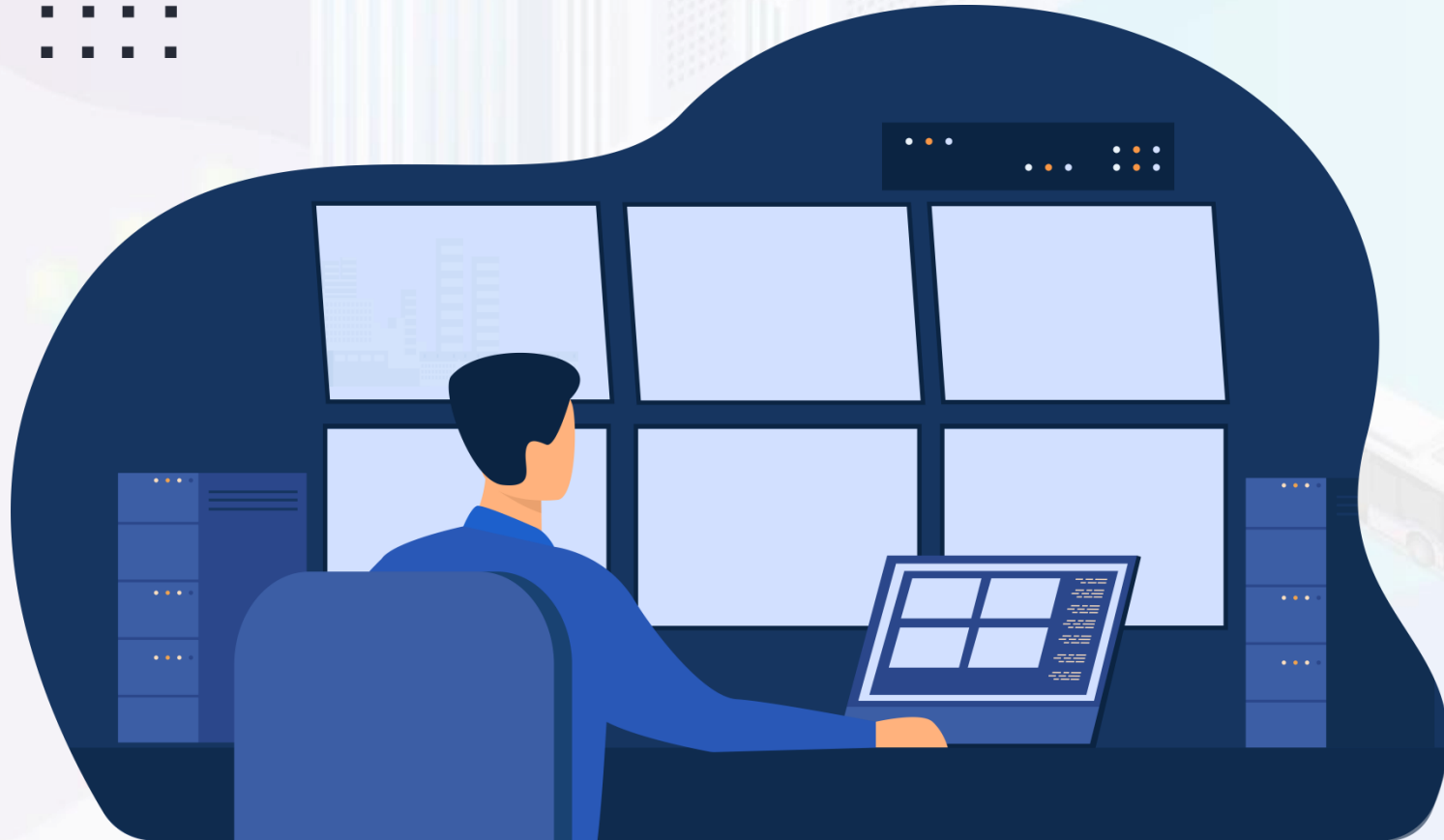


# EDSA BUSWAY

ROUTE NAME	NOU
ROUTE E. EDSA BUSWAY	428
ROUTE 9. CUBAO-ANTIPOLO	251
ROUTE 17. MONUMENTO - EDSA TAFT	182
ROUTE 5. QUEZON AVENUE - ANGAT	510
ROUTE 28. PITX - DASMARIÑAS	147
ROUTE 1. MONUMENTO - BALAGTAS	116
ROUTE 7. QUEZON AVENUE - MONTALBAN	159
ROUTE 18. PITX - NAIA LOOP	76
ROUTE 3. MONUMENTO - VGC	33
ROUTE 21. MONUMENTO - SJDM VIA NLEX	105
ROUTE 11. GILMORE - TAYTAY	78
ROUTE 13. PITX - BGC1	10
ROUTE 8. CUBAO - MONTALBAN	78
ROUTE 24. PITX - ALABANG	70
ROUTE 25. BGC - ALABANG	154
ROUTE 2. MONUMENTO - PITX	97
ROUTE 29. PITX - GENERAL MARIANO ALVAREZ	124

ROUTE NAME	NOU
ROUTE 4. NORTH EDSA - FAIRVIEW	173
ROUTE 6. QUEZON AVENUE - PITX2	393
ROUTE 16. AYALA - FTI COMPLEX	103
ROUTE 12. KALENTONG - PASIG	65
ROUTE 14. AYALA - ALABANG	166
ROUTE 15. AYALA - BIÑAN	105
ROUTE 27. PITX - TRECE MARTIRES	118
ROUTE 23. PITX - SUCAT	32
ROUTE 26. PITX - NAIC	113
ROUTE 30. PITX - CAVITE CITY	77
ROUTE 19. NORTH EDSA - BGC	85
ROUTE 20. MONUMENTO - MEYCAUAYAN VIA NLEX	10
ROUTE 22. MONUMENTO - ANGAT VIA NLEX, NLET3	160
ROUTE 10. CUBAO - DOROTEO JOSE	73
ROUTE 33. SRIT - AYALA	62
ROUTE 34. PITX - SRIT	72
ROUTE 35. AYALA - BALIBAGO	73
ROUTE 32. VGC - NORTH EDSA	52

# CPUVMS



Central Public Utility Vehicle Monitoring System (CPUVMS) aims to monitor operational PUVs in Metro Manila.

Currently monitoring EDSA Busway, but will extend further to other routes

CPUVMS will become basis of balancing supply and demand of PUVs





# SERVICE CONTRACTING PROGRAM

LAND TRANSPORTATION FRANCHISING  
&  
REGULATORY BOARD

# SERVICE CONTRACTING



In response, the **BAYANIHAN TO RECOVER ONE ACT (BAYANIHAN 2)** was passed, directing DOTr, through its attached agencies, to provide assistance to critically impacted businesses in the transportation industry, including transport cooperatives, which will materialize through the following programs: providing **temporary livelihood to displaced workers of the transportation industry** via **SERVICE CONTRACTING**, developing sidewalks and bicycle lanes, procuring units and equipment, and distribution.

# SERVICE CONTRACTING

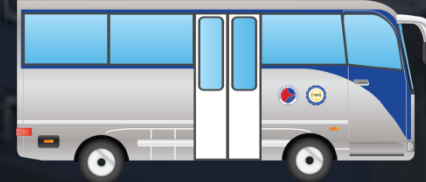
## WEEKLY PAYOUT for REGULAR SERVICE CONTRACTING



**PUB**

(from Php 23.10)

Php 45.50 per  
kilometer



**TPUJ & MPUJ**

(from Php 11)

Php 27 per  
kilometer

# SERVICE CONTRACTING

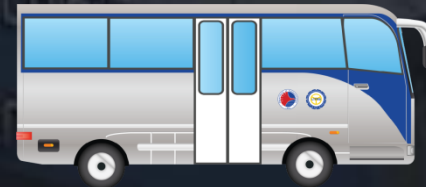
Board Resolution No. 029 Series of 2021  
WEEKLY PAYOUT of FREE RIDES for PUB and MPUJ



**PUB**

(from Php 46.80)

Php 82.50 per  
kilometer



**MPUJ**

Php 52.50 per  
kilometer

# SERVICE CONTRACTING

**service contracting**  
KAISA TUNGO SA MAS PINAHUSAY NA PASADA  
(Only administrative tasks are accepted regularly)

“  
Nakatanggap na po ako ng mahigit Php 30,000 mula sa Service Contracting Program ng LTFRB.  
Nagpapasalamat po ako sa programang ito at nakabili ako ng bigas at gatas ng aking anak. Malaking tulong ito sa aking pamilya.

**KENT ANTHONY YEO**  
Traditional Jeepney Driver  
Region IX

facebook.com/tftrb.central.office | www.servicecontracting.ph | 0995 580 8648 (Globe) 0968 600 1909 (Smart)

**service contracting**  
KAISA TUNGO SA MAS PINAHUSAY NA PASADA

“  
Ako po ay isa sa mga nakatanggap ng P29,000 mula sa Service Contracting Program. Malaking tulong po ito sa aming drivers para sa pang-araw-araw, pambayad ng renta at pambili ng bigas para sa aking pamilya.  
Maraming salamat po sa DOTr at LTFRB.

**RENANTE A. RESURRECION**  
Traditional Jeepney Driver  
Region I

facebook.com/tftrb.central.office | www.servicecontracting.ph | 0995 580 8648 (Globe) 0968 600 1909 (Smart)

**service contracting**  
KAISA TUNGO SA MAS PINAHUSAY NA PASADA

“  
Isa ako sa nakatanggap ng P25,000. Nagpapasalamat ako dahil malaking tulong po ito sa aking pamilya, lalo na pandemic ngayon madalang ang pasahero.  
Nagpapasalamat po kami sa DOTr at LTFRB, sana marami pa kayong matulungan na drivers.

**ALBERT MACARANDAN**  
Traditional Jeepney Driver  
Region X

facebook.com/tftrb.central.office | www.servicecontracting.ph | 0995 580 8648 (Globe) 0968 600 1909 (Smart)

# ROUTE RATIONALIZATION

CURRENT POLICIES TO CHANGE PUBLIC TRANSPOR STATUS QUO



**MPUI**  
UNDER SERVICE CONTRACTING



**TPUJ**  
UNDER SERVICE CONTRACTING

# SERVICE CONTRACTING PROGRAM

CURRENT POLICIES TO CHANGE PUBLIC TRANSPOR STATUS QUO

## EXISTING ROUTES (APORS & HCW)

NO. OF COOP/CORP	TOTAL NO. OF ROUTES	NO. OF UNITS DISPATCHED	TOTAL RIDERSHIP
85	49	676	8,609,410

## IDENTIFIED ROUTES (HCW)

NO. OF COOP/CORP	TOTAL NO. OF ROUTES	TOTAL IR ALREADY PLYING	NO. OF UNITS DISPATCHED	TOTAL RIDERSHIP
6	21	11	56	48162



Thank you!